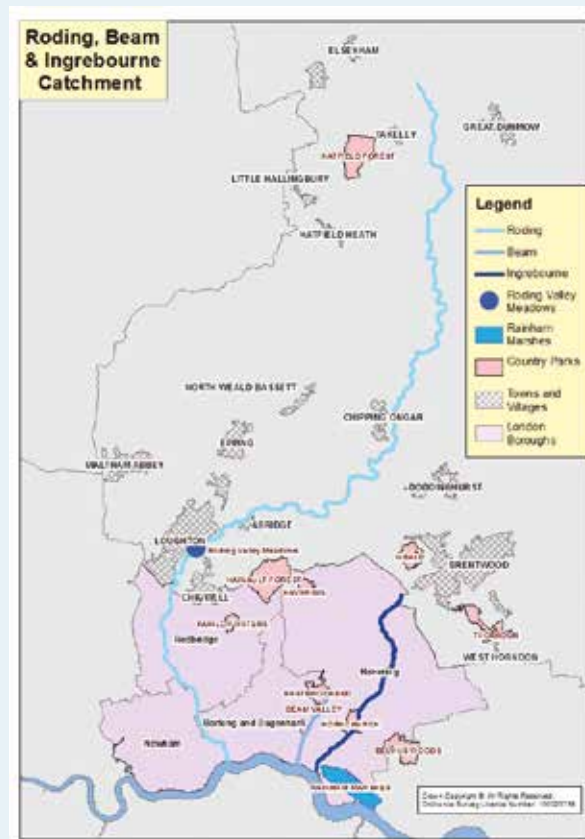




Current members of the Roding, Beam & Ingrebourne Catchment Partnership:



Thames Chase
enquiries@thameschase.org.uk
Essex Rivers Hub
www.essexrivershub.org.uk



Roding, Beam & Ingrebourne Catchment Plan 2015-2018

Vision Summary



Roding, Beam & Ingrebourne Catchment Partnership

The Roding, Beam & Ingrebourne Catchment Plan (RBICaP)

The Roding, Beam & Ingrebourne Catchment Partnership have considered the available information on this catchment to create a Catchment Plan. The single document has been compiled from data contained in each of the three original Roding, Beam & Ingrebourne Draft Catchment Plans and through direct workshop consultations.

The Roding, Beam & Ingrebourne Catchment Partnership

The Roding, Beam & Ingrebourne Catchment Partnership has been meeting quarterly since 2012 and is a focussed group of local stakeholders who are working together through a Catchment Based Approach (CaBA) to improve the rivers in the Roding, Beam & Ingrebourne Catchment and bring direct on-the-ground benefit to people and wildlife.

The Roding, Beam & Ingrebourne Catchment Partnership recognise the importance of our Rivers and Water. This resource is so important for recreation, wildlife, health, drinking, growing crops, industry, and waste water management. Collectively, we can better manage this resource by giving careful consideration to the amount of water we use.

The Roding, Beam & Ingrebourne Catchment Partnership recognises that this needs to be managed sustainably so that this vital resource can be passed on in the best possible condition to future generations.



Shared Vision for the Roding, Beam & Ingrebourne Catchment by 2027

The Roding, Beam & Ingrebourne Catchment:

- > is one which meets the objectives of the WFD and achieves Good Ecological Status.
- > provides naturally functioning ecosystems with a diverse and thriving wildlife.
- > will be valued and enjoyed by local communities and people will visit these areas as a destination for recreation and leisure.
- > will be free from Invasive Non-Native Species (INNS).
- > will be free from pollution and have reduced siltation.
- > will benefit from an effective Catchment Based Approach resulting in stronger partnerships between communities, businesses, landowners and managers.
- > is recognised as an exemplar and the clear Catchment Based Approach improvements achieved since 2012 are evident on the ground.

Roding, Beam & Ingrebourne Catchment Goals

To meet the Shared Vision for the Roding, Beam & Ingrebourne Catchment, our goals are to improve:

Recreation and raising awareness

To improve opportunities for recreation across the catchment and in turn raise awareness to a more sustainable use of this resource and ensure it is valued and appreciated.

River and floodplain management

To manage flood risk and sustainable drainage; improve connectivity, manage Invasive Non Native Species (INNS) and litter.

Water management

To improve the way in which water is captured and managed; and to reduce nutrients in our watercourses.

Land management

To work with land managers to improve habitats, and the way in which people can access their rivers and associated green spaces.

Investment in the Roding, Beam & Ingrebourne Catchment

To work with land managers; businesses and funding bodies to create inward investment opportunities for the Roding, Beam & Ingrebourne Catchment.